

# FiberLocator

A CCMI BUSINESS

FiberLocator Release Notes  
December 20, 2022

## New Features & Bug Fixes

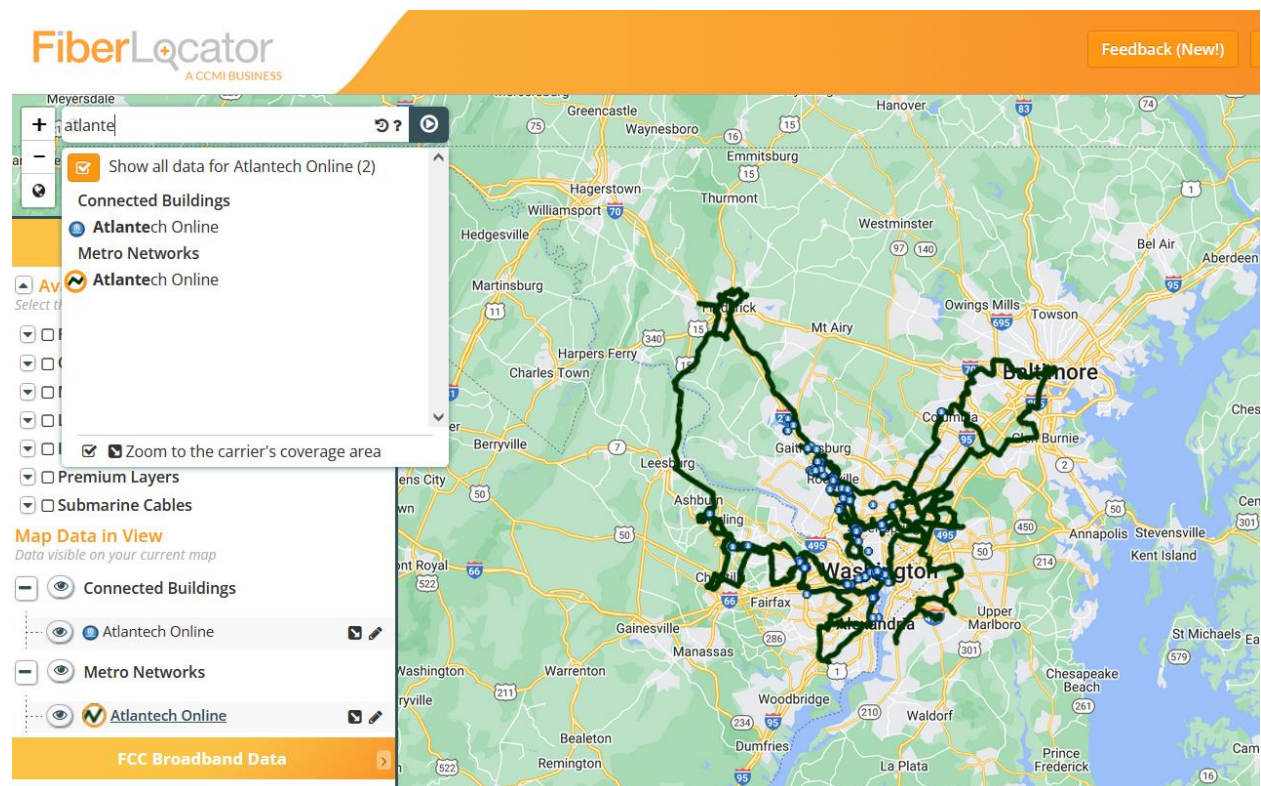
1

### Search and Access All Layers for a Carrier

Search for a specific carrier, see all the fiber assets available for the carrier in FiberLocator and then build a map with all their data.



This option saves time when searching for multiple layers for the same carrier and allows you to easily visualize the carrier's complete fiber footprint.



## 2

## Proprietary Layers Composite

This update is for users loading their own proprietary layers for access by internal users. If you have ever tried to display all your layers, you may have received the infamous message “Whoa, there’s a lot of fiber here!”. This was due to too many layers being selected at one time. (You still get this if you try to add more than 10 individual public layers.)

Now you have the option of selecting all your proprietary layers as a composite much like you can with the Metro, Long Haul and Lit Building layers.



Save time by seeing all proprietary layers on one map rather than creating multiple maps and selecting them in groups of 10.



## Bug Fixes

No bug fixes in this release.

For more information on these or any other FiberLocator features click on Support & Training at the top of the FiberLocator screen.

