




FiberLocator Release Notes August 4, 2023

New Features

1 Telco Central Offices

FiberLocator has added a new Connected Buildings type called Telco Central Offices.

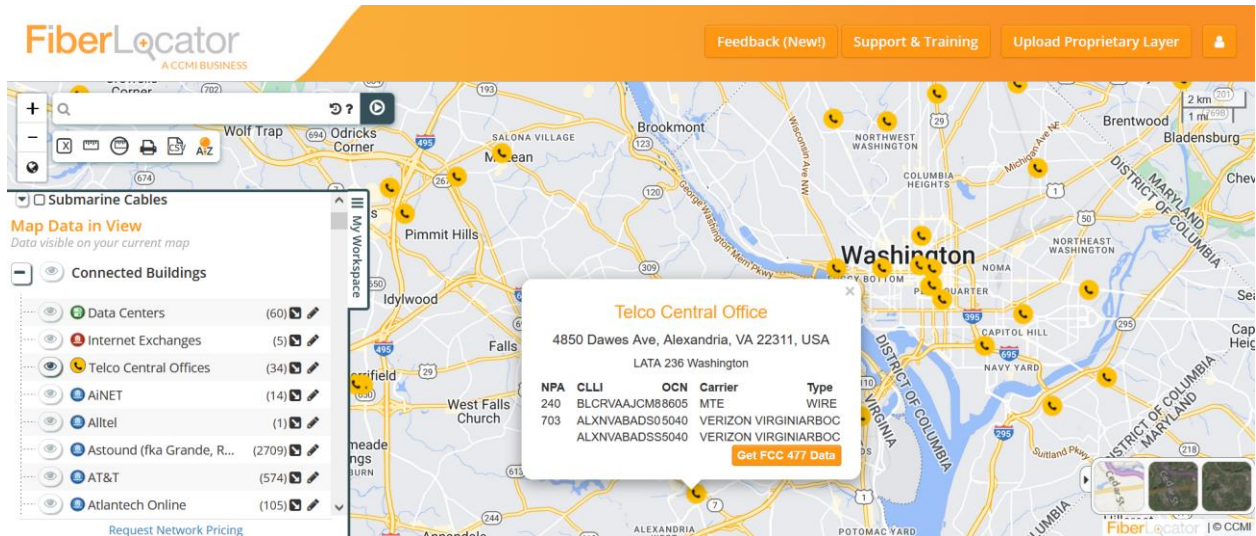
The Central Office is the main switching facility for a telco, providing access to the Plain Old Telephone Service (POTS), leased lines, and circuit-switched services that the telco offers to customers. The central office (CO) contains the switching equipment that connects telephone subscribers to both local and long-distance phone services. (Source: [Network Encyclopedia](#))

If you include Connected Buildings in your search, you will see Telco Central Offices listed after Data Centers and Internet Exchanges if there are any present in your map view. The CO locations are marked on the map with a black telephone receiver in a yellow circle . Clicking on a location displays the specific building information including:

Data Point	Description
Address	Building location address
LATA	Local Access Transport Area: 3-digit code and name of the geographic area that defines the limits of local calling rates.
NPA	Numbering Plan Area: the 3-digit area code designated for telephone numbers in a specific geographic area.
CLLI	Common Language Location Identifier: 11-character code that identifies the location and switch at a central office.
OCN	Operating Company Number: A 4-character code assigned to a telecom provider by the National Exchange Carrier Association (NECA).
Carrier	Name of the telco operating a switch in the central office.
Type	Carrier type including CLEC, ILEC, OVER, PCS, RBOC, WIRE



While central offices remain the hub of the telco wireline network for local access, central offices are also important network POPs for special access, leased line services, cloud computing, CDNs, and other connectivity services in some cases serving as mini data centers.



Bug Fixes & Miscellaneous Changes



Performance Improvement for Connected Building Counts

When searching for a provider's full lit building footprint, if the provider has a very large footprint such as Verizon, the number of buildings to count is significant and was taking a little too long to appear next to the provider name. We have sped that up and you should see a substantial improvement.



Displaying Census Block Polygons with Multiple Locations

A bug was occurring when adding a second location to the map and selecting the Get FCC 477 Data. The census block polygon displayed for the second location was presented correctly but if you went back to the first location, the census block polygon for the second location continued to be displayed instead of the census block polygon associated with the first location. This is now fixed.